



Zeker Modular Seating



Zeker prioritizes comfort and placemaking with its soft, plush lounge design and versatile modularity.

Key Features

A Softly Styled

Generous foam cushioning with rounded edges supports deep relaxation and deep focus.

B Endless Configurations

A simple statement of line features modular units that include low-back and backless units, single and multi-user units, and curved units that can be planned back-to-back.

C Flexible Environments

Durably crafted to stand the test of time, these modular units can reconfigure to support the ever-changing needs of your space.

D Material Options

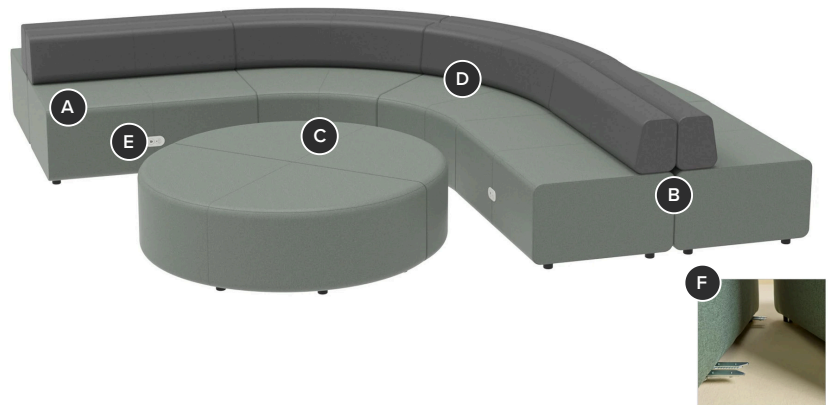
Select from a wide range of approved Pallas Textiles, KI Ingrade, or COM upholstery. Contrast or match seat and back fabrics, both enhanced by a beautifully crafted top stitch.

E Optional Power

Specify power for functional lounge environments. Available in four colors, power modules include 120V and USB-A+C ports.

F Ganging

Optional ganging kits are ordered separately and ensure configurations stay neat and tidy.



Styles

Backless



24" Backless
W24" D30.5" H18.5"



Half Round
W60" D32.5" H18.5"

Low Back



Lounge Chair
W24" D30.5" H29.5"
Seat: W24" D21.5" H18.5"



48" Rectangle
W48" D30.5" H29.5"
Seat: W48" D21.5" H18.5"



60" Rectangle
W60" D30.5" H29.5"
Seat: W60" D21.5" H18.5"



72" Rectangle
W72" D30.5" H29.5"
Seat: W72" D21.5" H18.5"



Corner
W30" D30.5" H29.5"
Seat: W30" D21.5" H18.5"



Inside Curve
W51.75" D30.5" H29.5"
Seat: W51.75" D21.5" H18.5"



Outside Curve
W51.75" D30.5" H29.5"
Seat: W51.75" D21.5" H18.5"



Extended Outside Curve
W75.75" D30.5" H29.5"
Seat: W75.75" D21.5" H18.5"

Options

Power



120V & USB-A+C

Upholstery



Non-Contrast



Contrast

Document Links

Brochure →

Pricing →

Videos →

Photography →

See It Spec It →

CAD/Revit Symbols →

Documents →

Material Approvals →

WARRANTY

Lifetime

MAXIMUM WEIGHT RATING

350 lbs.