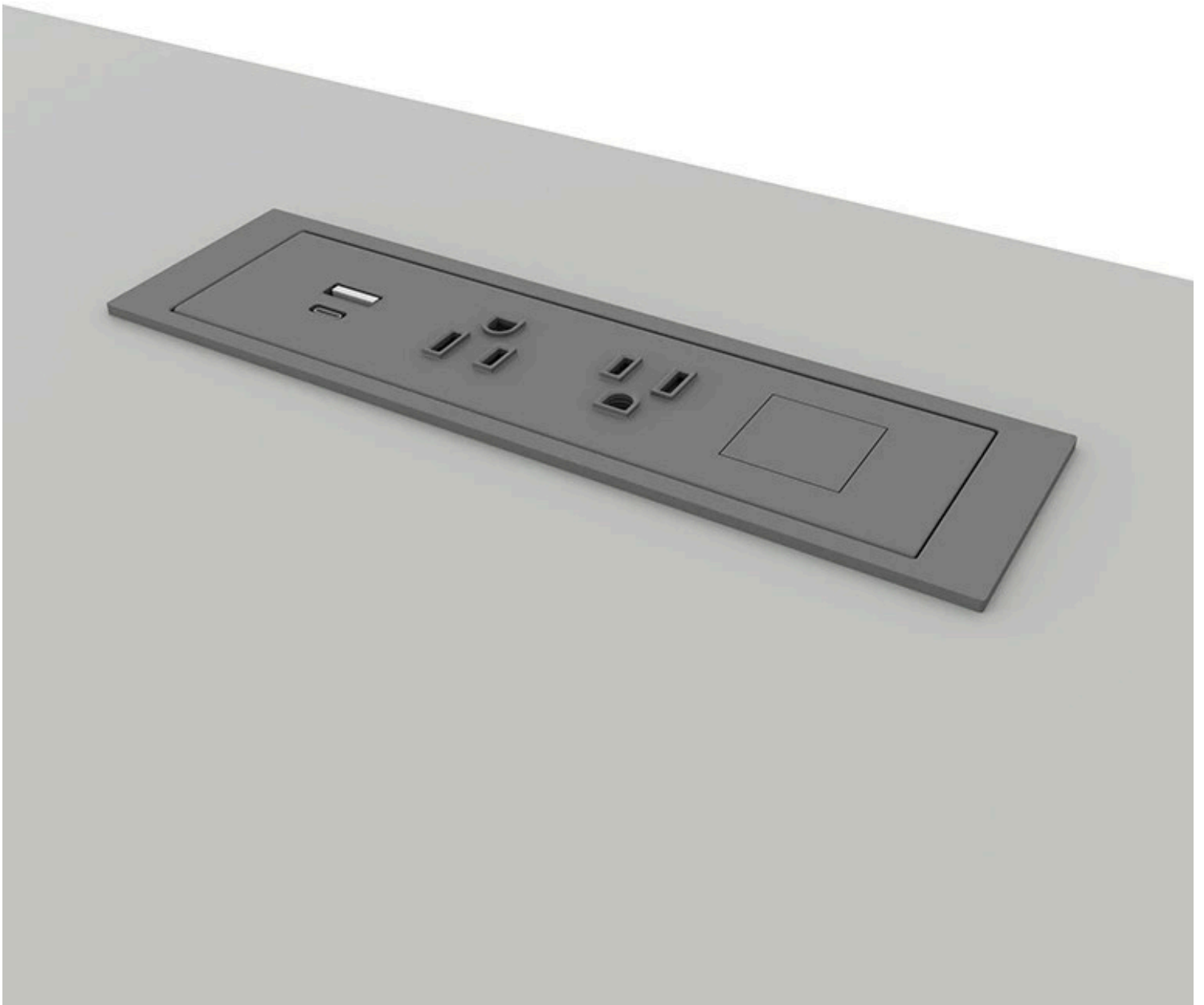


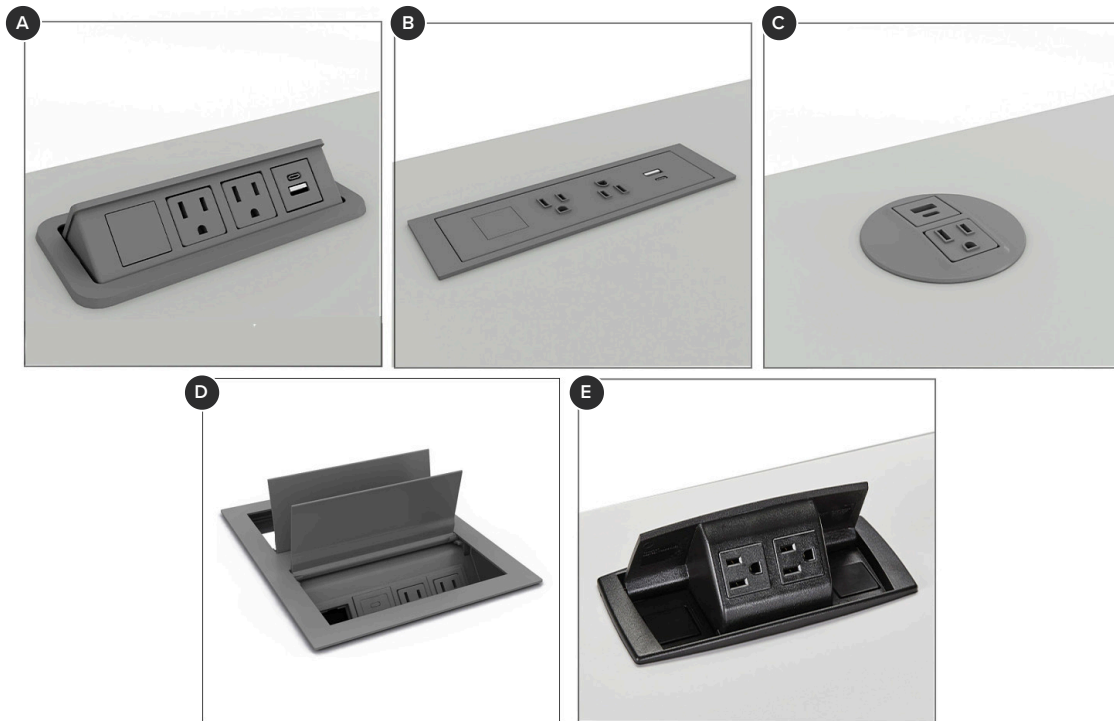


In-Surface Power Modules



Designed for sleek, clutter-free workspaces these in-surface power modules integrate directly into desks and tables.

Key Features



A Nacre Pop-Up

Push-to-open feature pops up the module for easy access to power.
Two receptacles for three-prong plugs.
USB-A and USB-C charging ports conveniently charge devices.
Available with single-circuit Pattern plug as well as three-prong corded power.

B Dean In-Surface

Two receptacles for three-prong plugs.
USB-A and USB-C charging ports conveniently charge devices.
Available with single-circuit Pattern plug as well as three-prong corded power.

C Node In-Surface

One receptacle for three-prong plugs.
USB-A and USB-C charging ports conveniently charge devices.
Round shape allows for easy field installation.
Available with single-circuit Pattern plug as well as three-prong corded power.

D Double Ellora B

Easy access to both sides of table with soft closing lid while allowing for cords to route through when closed.
Four total receptacles for three-prong plugs, two per side.
Two USB-A and two USB-C charging ports conveniently charge devices.
Two open data ports include data tree covers for flexibility.
Available with single-circuit Pattern plug as well as three-prong corded power.

E Power-Up

Mounts onto a variety of training tables, worksurfaces and desking systems.
Two data ports and two power outlets.
Modules plug directly into standard outlet.

Styles



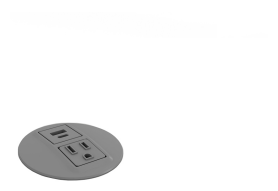
Dean In-Surface
W8.12" D2.3" H2.5"



Double Ellora B
W10.19" D8.31" H2.71"



Nacre Pop-Up
W7.25" D3.3" H2.92"



Node In-Surface
Dia.3.38" H3.3"



PowerUp
W7.18" D3" H2.92"

Document Links

Pricing →

Material Approvals →

Documents →

WARRANTY

15 Years

[View Terms & Conditions](#)