



Clamber Tiered Seating



Turn traditional seating rules upside down with Clamber reconfigurable, multi-level modular units. Designed for play, climbing, and collaboration, Clamber brings unmatched versatility with optional integrated walls and worksurfaces, effortlessly transforming any space.

Key Features



A Modular Tiered Seating

Linear and curved multi-level shapes support sitting, standing, or climbing. Laminate tier tops can be used to designate aisleways. Seating ganging kits are available and ordered separately.

B Walls & Worksurfaces

Walls and integrated worksurfaces* offer enhanced capabilities, support, and space division. Worksurface ganging kits and post leg kits are available and ordered separately.

*Must order wall with worksurface mount and worksurface separately.

C Sustainable Design

Tier tops are replaceable to easily update design or extend product lifespan.

D Durability

Built to withstand daily use in high-traffic areas, materials are easy to clean or replace. A 600-pound weight rating ensures maximum durability.

E Material Options

Match or contrast tier tops with a range of high-performance Pallas Textiles, KI Ingrade, or COM upholstery. Select thread color for the double-needle stitching. Laminate tier tops are available in various finish options.

F Integrated Power

Available in four colors, optional power modules include 125V and USB-A+C ports with several location options. Each module has its own 3-prong plug.

Styles

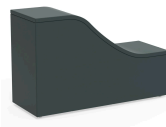
One Tier



Straight
W 24, 36, 48"
D 18"
H 15"



Square
W36" D36" H15"



Wave
W48" D18" H30"
*Available Left or Right



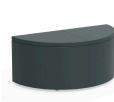
S-Curve
W48" D18" H15"
*Available Left or Right



Inside Corner
W76.5" D18" H15"



45° Inside Curve
W70.25" D18" H15"



Half Round
W36" D18.5" H15"



Half Oval
W54" D18.25" H15"

Two Tier



Straight
W 24, 36, 48"
D 36"
H 30"
Tier Height: 15"



Wave
W48" D36" H30"
Tier Height: 15"
*Available Left or Right



S-Curve
W48" D36" H30"
Tier Height: 15"
*Available Left or Right



Inside Corner
W51" D36" H30"
Tier Height: 15"



Outside Corner
W51" D36" H30"
Tier Height: 15"

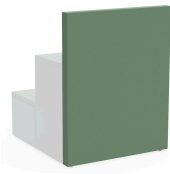


45° Inside Curve
W56.5" D36" H30"
Tier Height: 15"



45° Outside Curve
W56.5" D36" H30"
Tier Height: 15"

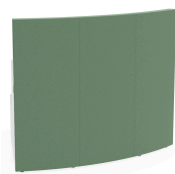
Wall



Straight
W 24, 36, 48"
D 3"
H 45"



Inside Corner
W55.25" D3" H45"



45° Inside Curve
W58.5" D3" H45"



45° Outside Curve
W29.75" D3" H45"

Wall with Worksurface Mount



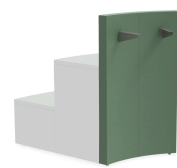
Straight
W 24, 36, 48"
D 11.25"
H 45"



Inside Corner
W64.5" D11.25" H45"



45° Inside Curve
W61.5" D11.25" H45"



45° Outside Curve
W29.75" D11.25" H45"

Worksurface

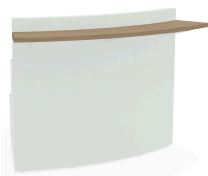
*Must Order with Wall with Worksurface Mount



Straight
W 24, 36, 48"
D 12"
H 1.25"
Assembled Height: 42"



Inside Corner
W71.75" D12" H1.25"
Assembled Height: 42"



45° Inside Curve
W67.75" D12" H1.25"
Assembled Height: 42"



45° Outside Curve
W27" D12" H1.25"
Assembled Height: 42"

Options

Power

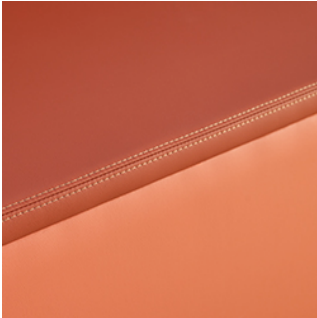


125V & USB-A+C

Upholstery



Non-Contrast



Contrast

Tier Top



Laminate



Upholstered

Document Links

Brochure →

Pricing →

Idea Starters →

Videos →

Photography →

CAD/Revit Symbols →

Documents →

Material Approvals →

WARRANTY

Lifetime

[View Terms & Conditions](#)

WEIGHT RATING

600 lbs.