



APPROVED MATERIALS FOR
Tattoo Screens

Frame/Trim Color (31)

Applies To: Monolithic Flex Screen with Dual Sided Fluted Polycarbonate Core (TFMP)



Black
BL



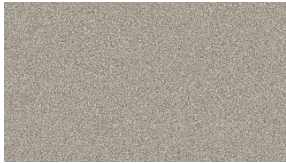
Blue Grey
GR



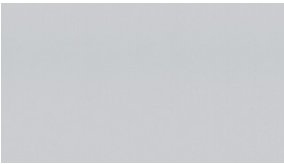
Bronze Metallic
ZM



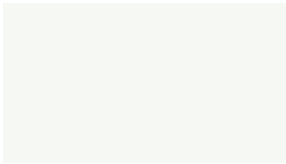
Cayenne
CY



Champagne Metallic
CM



Cool Grey
CG



Cottonwood
CO



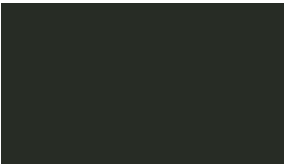
Earthen Clay
EY



Espresso Metallic
EX



Everglade Shade
EV



Flannel
FN



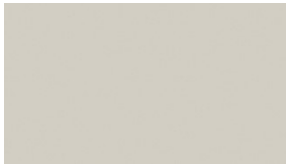
Glitz Metallic
GZ



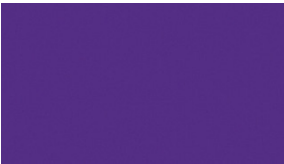
Hazy Jade
HJ



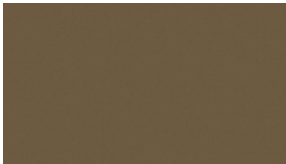
Honey Bee
HY



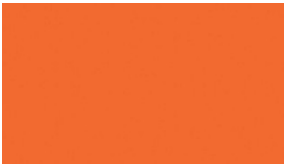
Light Tone
LG



Mardi Gras
MG



Misty Brown
MY



Nemo
NE



Nordic
ND



Purple Haze
PH



Rubber Ducky
RK



Rainforest
RQ



Sand
SA



Raw Jasper
RJ



**Starlight Silver
Metallic**

SX



Surf's Up

SP



Twilight Shadow

TI



Ultra Blue

UB



Tarragon

TQ



Warm Grey

WG

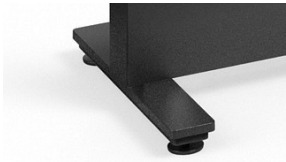


Zesty Lime

ZL

Foot Option (2)

Applies To: Monolithic Flex Screen with Dual Sided Fluted Polycarbonate Core (TFMP)



Adjustable

FADJ



Flat/bridge

FFLB

Approvals for KI surface materials are subject to change. Please visit ki.com/surfacematerials to view the latest material approvals.

800.424.2432

INFO@KI.COM