

**Rattan**

8 colors



**Ripple Effect**

2 colors



**Rogue**

22 colors



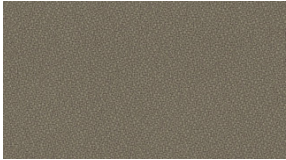
**Shifting Sand**

5 colors



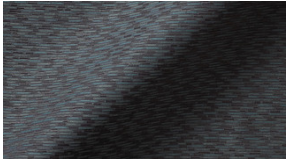
**Sillio**

9 colors



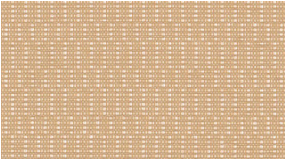
**Spectrum**

15 colors



**Square Off**

6 colors



**Theorum**

9 colors



**Topstitch**

7 colors



**Travertine**

6 colors

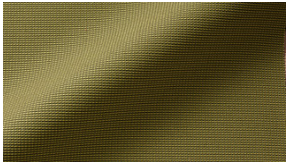
## Fabrics (2)

**Applies To:** Dual-Purpose Sliding Board (TSDPB)



**Glitz**

19 colors



**Marbles**

7 colors

## Fabrics (1)

**Applies To:** Magnetic Tackboard Tile (TTB)



**Reverie**

18 colors

## Frame/Trim Color (31)

**Applies To:** Monolithic Flex Screen with Dual Sided Fluted Polycarbonate Core (TFMP), Non-Powered Monolithic Spine Screen with Magnetic Dry-Erasable Steel Core (TSSNE), Monolithic Flex Screen with Dual Sided Tackable Fabric Core (TFMF), Topper Kit (TSTP), Segmented Flex Screen w/Fabric Lower and Upper Cores (TFSFF), Segmented Flex Screen with Fabric Lower, Acrylic Upper Core (TFSFA), Monolithic Flex Screen with Polyester Felt Core (TFMZ), Segmented Flex Screen w/Fabric Lower, Fluted Polycarbonate Upper Core (TFSFP), Powered Monolithic Spine Screen with Thermally-Fused Laminate Core (TSSPM), Segmented Flex Screen w/Thermally Fused Laminate Lower, Polyester Felt Upper Core (TFSMZ), Segmented Flex Screen w/Thermally Fused Laminate Lower, Fluted Polycarbonate Upper Core (TFSMP), Segmented Flex Screen w/Polyester Felt Lower, Fabric Upper Core (TFSZF ), Segmented Flex Screen w/Thermally Fused Laminate Lower, Acrylic Upper Core (TFSMA), Monolithic Flex Screen with Thermally-Fused Laminate Core (TFMM), Segmented Flex Screen w/Fabric Lower, Polyester Felt Upper Core (TFSFZ), Segmented Flex Screen w/Thermally Fused Laminate Lower, Fabric Upper Core (TFSMF), Segmented Flex Screen with Fabric Lower, Magnetic Dry-Erasable Steel Upper Core (TFSFE), Segmented Flex Screen with Polyester Felt Lower, Magnetic Dry-Erasable Steel Upper Core (TFSZE), Segmented Flex Screen w/Polyester Felt Lower, Acrylic Upper Core (TFSZA ), Segmented Flex Screen w/Thermally Fused Laminate Lower, Magnetic Dry-Erasable Steel Upper Core (TFSME), Segmented Flex Screen w/Polyester Felt Lower, Fluted Polycarbonate

Upper Core (TFSZP), Segmented Flex Screen w/Thermally Fused Laminate Lower and Upper Core (TFSMM), Powered Monolithic Spine Screen with Magnetic Dry-Erasable Steel Core (TSSPE), Monolithic Flex Screen with Magnetic Dry-Erasable Steel Core (TFME), Segmented Flex Screen w/Polyester Felt Lower and Thermally Fused Laminate Upper Core (TFSZM), Non-Powered Monolithic Spine Screen with Thermally-Fused Laminate Core (TSSNM), Segmented Flex Screen w/Fabric Lower, Thermally Fused Laminate Upper Core (TFSFM), Monolithic Flex Screen with Acrylic Core (TFMA)



**Black**  
BL



**Blue Grey**  
GR



**Bronze Metallic**  
ZM



**Cayenne**  
CY



**Champagne Metallic**  
CM



**Cool Grey**  
CG



**Cottonwood**  
CO



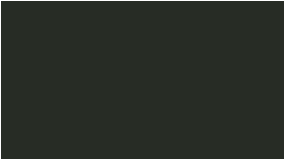
**Earthen Clay**  
EY



**Espresso Metallic**  
EX



**Everglade Shade**  
EV



**Flannel**  
FN



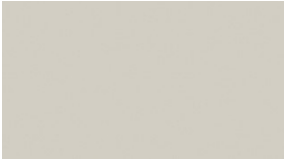
**Glitz Metallic**  
GZ



**Hazy Jade**  
HJ



**Honey Bee**  
HY



**Light Tone**  
LG



**Mardi Gras**  
MG



**Misty Brown**  
MY



**Nemo**  
NE



**Nordic**  
ND



**Purple Haze**  
PH



**Rainforest**  
RQ



**Rubber Ducky**  
RK



**Raw Jasper**  
RJ



**Sand**  
SA



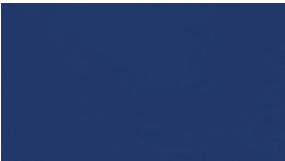
**Starlight Silver  
Metallic**  
SX



**Surf's Up**  
SP



**Twilight Shadow**  
TI



**Ultra Blue**  
UB



**Warm Grey**  
WG



**Tarragon**  
TQ

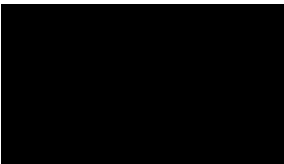




**Zesty Lime**  
ZL

**Paint Color (31)**

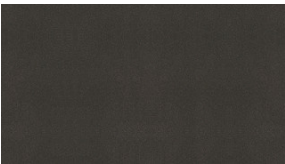
Applies To: Winged Coat Hook (TCTHK)



**Black**  
BL



**Blue Grey**  
GR



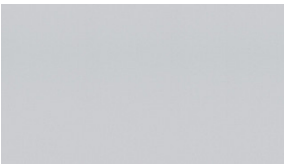
**Bronze Metallic**  
ZM



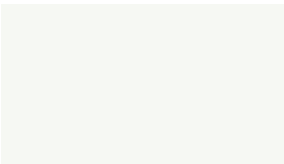
**Cayenne**  
CY



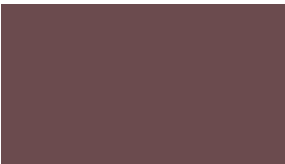
**Champagne Metallic**  
CM



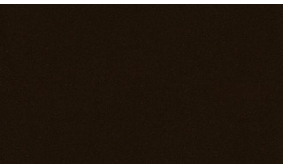
**Cool Grey**  
CG



**Cottonwood**  
CO



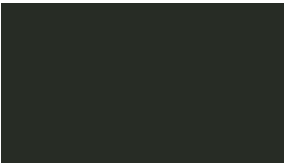
**Earthen Clay**  
EY



**Espresso Metallic**  
EX



**Everglade Shade**  
EV



**Flannel**  
FN



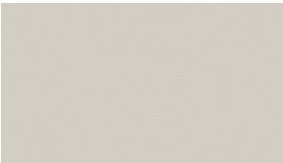
**Glitz Metallic**  
GZ



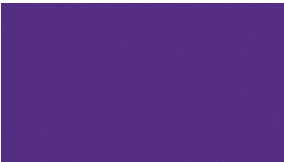
**Hazy Jade**  
HJ



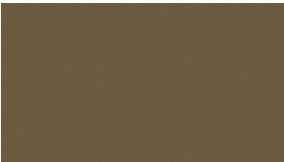
**Honey Bee**  
HY



**Light Tone**  
LG



**Mardi Gras**  
MG



**Misty Brown**  
MY



**Nemo**  
NE



**Nordic**  
ND



**Purple Haze**  
PH



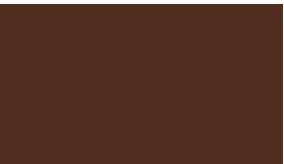
**Rainforest**  
RQ



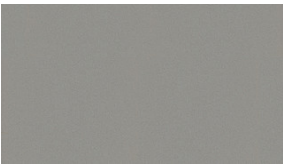
**Rubber Ducky**  
RK



**Sand**  
SA



**Raw Jasper**  
RJ



**Starlight Silver  
Metallic**  
SX



**Surf's Up**

SP



**Twilight Shadow**

TI



**Ultra Blue**

UB



**Warm Grey**

WG



**Tarragon**

TQ



**Zesty Lime**

ZL

**Patterned Magnetic Insert Polyester Felt Color (21)**

Applies To: Patterned Polyester Felt Magnetic Insert (TPMI)



**Dandelion**

**Foreground/Flannel  
Background**

FTDDFN



**Dandelion**

**Foreground/Heather  
Background**

FTDDHR



**Dandelion**

**Foreground/White  
Background**

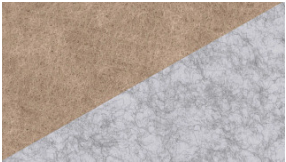
FTDDWH



**Fawn**

**Foreground/Flannel  
Background**

FTFWFN



**Fawn**

**Foreground/Heather  
Background**

FTFWHR



**Fawn**

**Foreground/White  
Background**

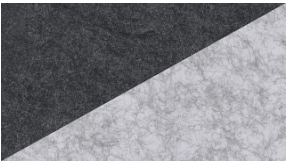
FTFWWH



**Flannel**

**Foreground/Flannel  
Background**

FTFNFN



**Flannel**

**Foreground/Heather  
Background**

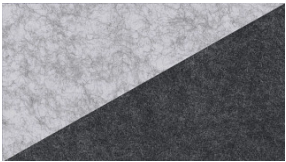
FTFNHR



**Flannel**

**Foreground/White  
Background**

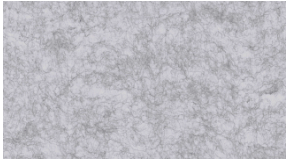
FTFNWH



**Heather**

**Foreground/Flannel  
Background**

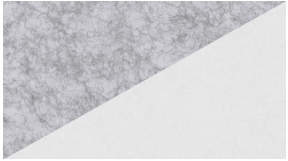
FTHR FN



**Heather**

**Foreground/Heather  
Background**

FTHRHR



**Heather**

**Foreground/White  
Background**

FTHRWH



**Lava**

**Foreground/Flannel  
Background**

FTLVFN



**Lava**

**Foreground/Heather  
Background**

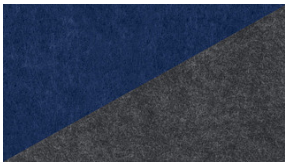
FTLVHR



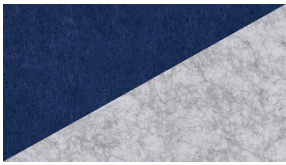
**Lava**

**Foreground/White  
Background**

FTLVWH



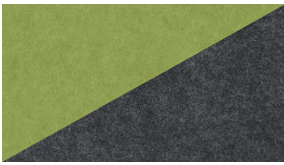
**Midnight Blue  
Foreground/Flannel  
Background**  
FTMBFN



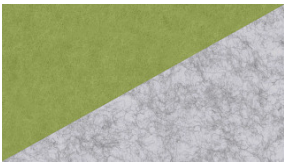
**Midnight Blue  
Foreground/Heather  
Background**  
FTMBHR



**Midnight Blue  
Foreground/White  
Background**  
FTMBWH



**Spring  
Foreground/Flannel  
Background**  
FTSGFN



**Spring  
Foreground/Heather  
Background**  
FTSGHR



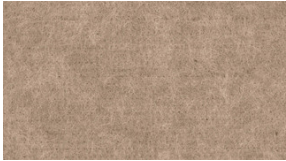
**Spring  
Foreground/White  
Background**  
FTSGWH

# Lower Polyester Felt Color (10)

**Applies To:** Segmented Flex Screen w/Polyester Felt Lower, Fabric Upper Core (TFSZF ), Segmented Flex Screen with Polyester Felt Lower, Magnetic Dry-Erasable Steel Upper Core (TFSZE), Segmented Flex Screen w/Polyester Felt Lower, Acrylic Upper Core (TFSZA ), Segmented Flex Screen w/Polyester Felt Lower, Fluted Polycarbonate Upper Core (TFSZP), Segmented Flex Screen w/Polyester Felt Lower and Thermally Fused Laminate Upper Core (TFSZM)



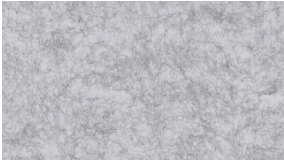
**Dandelion**  
LFTDD



**Fawn**  
LFTFW



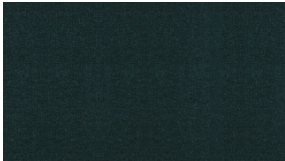
**Flannel**  
LFTFN



**Heather**  
LFTHR



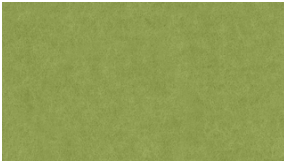
**Lava**  
LFTLV



**Mallard**  
LFTML



**Midnight Blue**  
LFTMB



**Spring**  
LFTSG



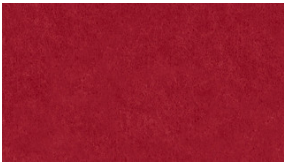
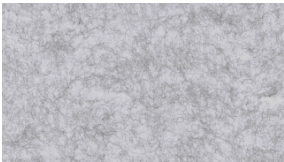
**Pepper**  
LFTPR








**Tidal Wave**  
LFTTW

# Polyester Felt Color (10)

**Applies To:** Topper Kit (TSTP), Monolithic Flex Screen with Polyester Felt Core (TFMZ), Segmented Flex Screen w/Thermally Fused Laminate Lower, Polyester Felt Upper Core (TFSMZ), Solid Polyester Felt Magnetic Insert (TSMI)




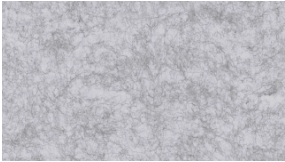










<b>Dandelion</b> FTDD	<b>Fawn</b> FTFW	<b>Flannel</b> FTFN	<b>Heather</b> FTHR	<b>Lava</b> FTLV
				
<b>Mallard</b> FTML	<b>Midnight Blue</b> FTMB	<b>Spring</b> FTSG	<b>Pepper</b> FTPR	<b>Tidal Wave</b> FTTW

## Upper Polyester Felt Color (10)

**Applies To:** Segmented Flex Screen w/Fabric Lower, Polyester Felt Upper Core (TFSFZ)

				
<b>Dandelion</b> UFTDD	<b>Fawn</b> UFTFW	<b>Flannel</b> UFTFN	<b>Heather</b> UFTHR	<b>Lava</b> UFTLV
				
<b>Midnight Blue</b> UFTMB	<b>Mallard</b> UFTML	<b>Spring</b> UFTSG	<b>Pepper</b> UFTPR	<b>Tidal Wave</b> UFTTW

## Bezel Color (8)

**Applies To:** Powered Monolithic Spine Screen with Thermally-Fused Laminate Core (TSSPM), Powered Monolithic Spine Screen with Magnetic Dry-Erasable Steel Core (TSSPE)

				
<b>Black</b> BBL	<b>Blue Grey</b> BGR	<b>Cool Grey</b> BCG	<b>Cottonwood</b> BCO	<b>Light Tone</b> BLG
				
<b>Misty Brown</b> BMY	<b>Sand</b> BSA	<b>Warm Grey</b> BWG		

## Laminate Color Lower (5)

**Applies To:** Segmented Flex Screen w/Thermally Fused Laminate Lower, Polyester Felt Upper Core (TFSMZ), Segmented Flex Screen w/Thermally Fused Laminate Lower, Fluted Polycarbonate Upper Core (TFSMP), Segmented Flex Screen w/Thermally Fused Laminate Lower, Acrylic Upper Core (TFSMA), Segmented Flex Screen w/Thermally Fused Laminate Lower, Fabric Upper Core (TFSMF), Segmented Flex Screen w/Thermally Fused Laminate Lower, Magnetic Dry-Erasable Steel Upper Core (TFSME), Segmented Flex Screen w/Thermally Fused Laminate Lower and Upper Core (TFSMM)



Cherry Storm  
LLCX



Florence Walnut  
LLFC



Italian Silver Ash  
LLIT



Kensington Maple  
LLKM



River Cherry  
LLRY

## Laminate Finish (5)

**Applies To:** Powered Monolithic Spine Screen with Thermally-Fused Laminate Core (TSSPM), Monolithic Flex Screen with Thermally-Fused Laminate Core (TFMM), Non-Powered Monolithic Spine Screen with Thermally-Fused Laminate Core (TSSNM)



Cherry Storm  
LCX



Florence Walnut  
LFC



Italian Silver Ash  
LIT



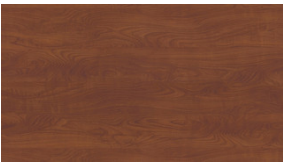
Kensington Maple  
LKM



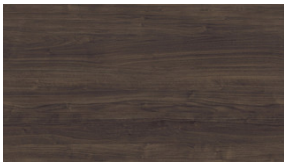
River Cherry  
LRY

## Laminate Color Upper (5)

**Applies To:** Segmented Flex Screen w/Thermally Fused Laminate Lower and Upper Core (TFSMM), Segmented Flex Screen w/Polyester Felt Lower and Thermally Fused Laminate Upper Core (TFSZM), Segmented Flex Screen w/Fabric Lower, Thermally Fused Laminate Upper Core (TFSFM)



Cherry Storm  
ULCX



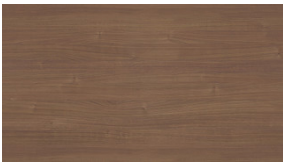
Florence Walnut  
ULFC



Italian Silver Ash  
ULIT



Kensington Maple  
ULKM



River Cherry  
ULRY

## Acrylic Finish (4)

**Applies To:** Topper Kit (TSTP), Segmented Flex Screen with Fabric Lower, Acrylic Upper Core (TFSFA), Segmented Flex Screen w/Thermally Fused Laminate Lower, Acrylic Upper Core (TFSMA), Segmented Flex Screen w/Polyester Felt Lower, Acrylic Upper Core (TFSZA ), Monolithic Flex Screen with Acrylic Core (TFMA)



Kiwi



Pumpkin



Sunshine

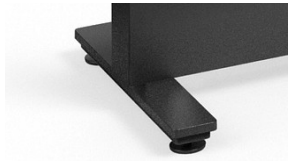


Tomato



## Foot Option (2)

**Applies To:** Monolithic Flex Screen with Dual Sided Fluted Polycarbonate Core (TFMP), Monolithic Flex Screen with Dual Sided Tackable Fabric Core (TFMF), Segmented Flex Screen w/Fabric Lower and Upper Cores (TFSFF), Segmented Flex Screen with Fabric Lower, Acrylic Upper Core (TFSFA), Monolithic Flex Screen with Polyester Felt Core (TFMZ), Segmented Flex Screen w/Fabric Lower, Fluted Polycarbonate Upper Core (TFSFP), Segmented Flex Screen w/Thermally Fused Laminate Lower, Polyester Felt Upper Core (TFSMZ), Segmented Flex Screen w/Thermally Fused Laminate Lower, Fluted Polycarbonate Upper Core (TFSMP), Segmented Flex Screen w/Polyester Felt Lower, Fabric Upper Core (TFSZF), Segmented Flex Screen w/Thermally Fused Laminate Lower, Acrylic Upper Core (TFSMA), Monolithic Flex Screen with Thermally Fused Laminate Core (TFMM), Segmented Flex Screen w/Fabric Lower, Polyester Felt Upper Core (TFSFZ), Segmented Flex Screen w/Thermally Fused Laminate Lower, Fabric Upper Core (TFSMF), Segmented Flex Screen with Fabric Lower, Magnetic Dry-Erasable Steel Upper Core (TFSFE), Segmented Flex Screen with Polyester Felt Lower, Magnetic Dry-Erasable Steel Upper Core (TFSZE), Segmented Flex Screen w/Polyester Felt Lower, Acrylic Upper Core (TFSZA), Segmented Flex Screen w/Thermally Fused Laminate Lower, Magnetic Dry-Erasable Steel Upper Core (TFSME), Segmented Flex Screen w/Polyester Felt Lower, Fluted Polycarbonate Upper Core (TFSZP), Segmented Flex Screen w/Thermally Fused Laminate Lower and Upper Core (TFSMM), Monolithic Flex Screen with Magnetic Dry-Erasable Steel Core (TFME), Segmented Flex Screen w/Polyester Felt Lower and Thermally Fused Laminate Upper Core (TFSZM), Segmented Flex Screen w/Fabric Lower, Thermally Fused Laminate Upper Core (TFSFM), Monolithic Flex Screen with Acrylic Core (TFMA)



**Adjustable**

FADJ



**Flat/bridge**

FFLB

## Magnetic Storage Color (1)

**Applies To:** Magnetic Storage Accessories (TMGAC)



**White**

W

## Magnetic Shelf Color (1)

**Applies To:** Magnetic Storage Accessories (TMGAC)



**White**

W

Approvals for KI surface materials are subject to change. Please visit [ki.com/surfacematerials](https://ki.com/surfacematerials) to view the latest material approvals.

