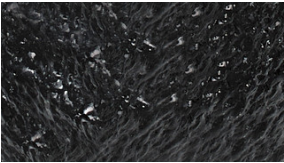




APPROVED MATERIALS FOR  
**Cafeway Cafeteria Tables**

# Surface Edge color (2)

Applies To: Racetrack Table with Wheelchair Access (EWELP)



**Black-carbon**  
ESCN



**Black-onyx**  
EUOX

Approvals for KI surface materials are subject to change. Please visit [ki.com/surfacematerials](https://ki.com/surfacematerials) to view the latest material approvals.