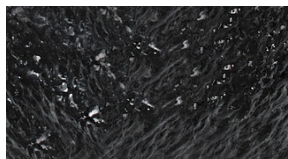




APPROVED MATERIALS FOR
CafeWay Cafeteria Tables

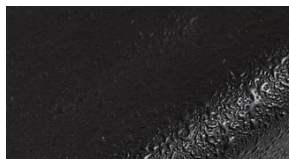
Surface Edge color (2)

Applies To: Round Wheelchair Table (EWRDP)



Black-carbon

ESCN



Black-onyx

EUOX

Approvals for KI surface materials are subject to change. Please visit ki.com/surfacematerials to view the latest material approvals.

800.424.2432

INFO@KI.COM