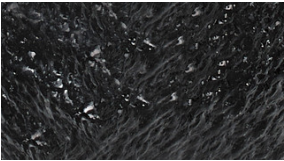




APPROVED MATERIALS FOR
CafeWay Cafeteria Tables

Bench Edge color (2)

Applies To: Round Wheelchair Table (EWRDP)



Black-carbon
BESCN



Black-onyx
BEUOX

Approvals for KI surface materials are subject to change. Please visit ki.com/surfacematerials to view the latest material approvals.