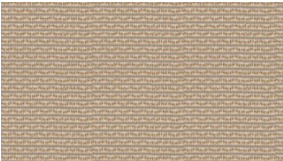




APPROVED MATERIALS FOR  
**Tattoo Screens**

# Fabrics (30)

Applies To: Segmented Flex Screen with Fabric Lower, Magnetic Dry-Erasable Steel Upper Core (TFSFE)



**Axiom**  
6 colors



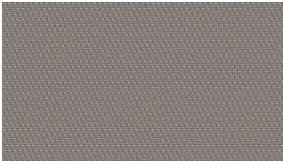
**Basis**  
6 colors



**Business Casual**  
1 colors



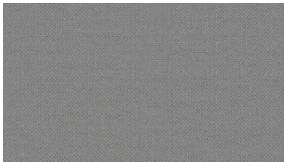
**Busmanti**  
7 colors



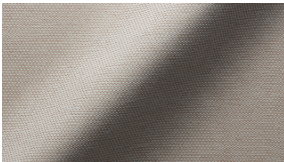
**Calculation**  
6 colors



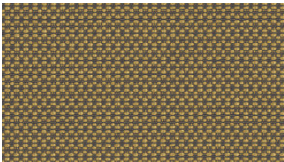
**Circuitry**  
8 colors



**Craft**  
22 colors



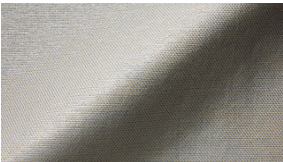
**Exponential**  
12 colors



**Fractal**  
9 colors



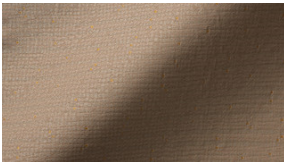
**Freehand**  
1 colors



**Glissade**  
8 colors



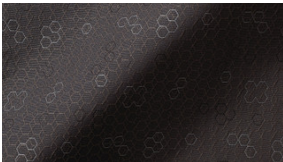
**Gridlock**  
9 colors



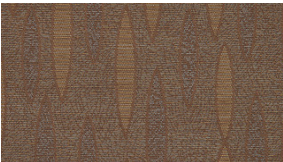
**Hopscotch**  
7 colors



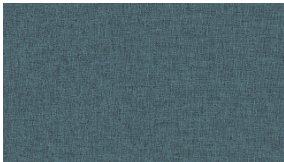
**Horizon Line**  
4 colors



**Ion**  
6 colors



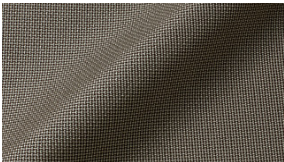
**Lex**  
1 colors



**Lore**  
21 colors



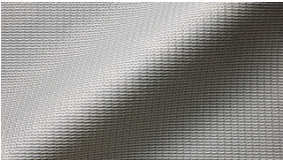
**New Twist**  
3 colors



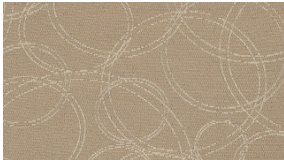
**Popcorn**  
20 colors



**Prism**  
8 colors



**Rattan**  
8 colors



**Ripple Effect**  
2 colors



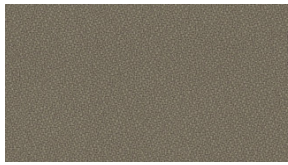
**Rogue**  
22 colors



**Shifting Sand**  
5 colors

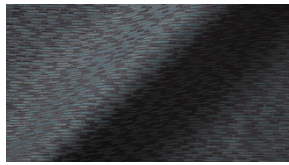


**Sillio**  
9 colors



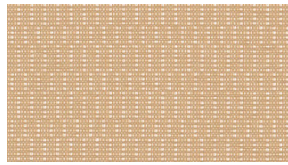
### **Spectrum**

15 colors



### **Square Off**

6 colors



### **Theorum**

9 colors



### **Topstitch**

7 colors



### **Travertine**

6 colors

Approvals for KI surface materials are subject to change. Please visit [ki.com/surfacematerials](https://ki.com/surfacematerials) to view the latest material approvals.

800.424.2432

[INFO@KI.COM](mailto:INFO@KI.COM)